

World 3000 boiler is a wall hung combination boiler that provides a closed loop boiler heating system and an on-demand water heater in one package. The boiler is CSA certified and listed under the Canadian Energy Star Program.

ON-DEMAND DONE RIGHT

Unlike other on demand heating systems, the World 3000 is capable of supplying water at any flow rate. There is **no minimum flow rate** thanks to an intelligently designed heat exchanger that stores a small volume of warm water completely eliminating the cold slug of water that frequently confronts users of other brands of on demand water heater.

For **warm water instantly** at any fixture, this unit is compatible with any type of re-circulation system.

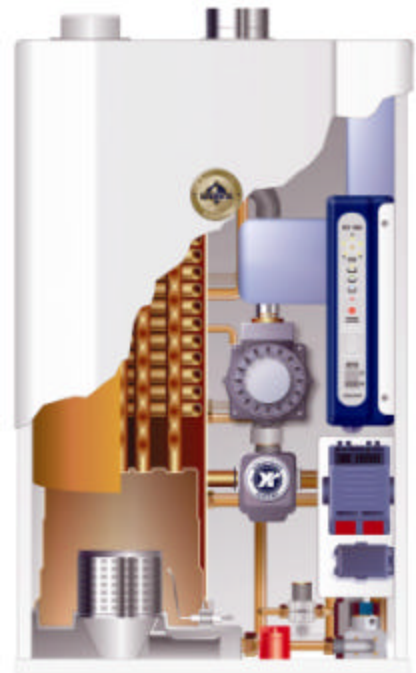
Domestic priority momentarily suspends space-heating water to commit 100% of the boilers capacity to domestic needs during large water draws

SUPERIOR SPACE HEATING

ENERGY STAR +85% efficient.

Micro-loads are no challenge for the World 3000. Most modulating boilers are limited to how small the load can be. The World3000 heat exchanger with internal storage eliminates the control problems associated with short cycling modulating low mass boilers at very small loads.

Self-contained assembly means no boiler feed or expansion tank required external to the unit. Just hang the boiler and hook up the space-heating appliance. **Built-in pump** allows for direct connection to simple loads without the need to add an external pump.



WORLD3000 BOILER



SPECIFICATIONS	BOILER MODEL			
	W3-16DNS	W3-20DNS	W3-25DNS	W3-30DNS
General				
ENERGY STAR	YES	-	YES	-
Boiler efficiency (AFUE)	85.5	84.3	85.5	84.3
Steady State Efficiency	86.1	85.2	86.1	85.2
Capacity Input (Btu/Hr)	76,200	95,200	117,900	138,000
Capacity output (Btu/Hr)	65,600	81,100	101,500	117,600
High Altitude Input	72,400	90,400	112,000	131,100
High Altitude Output	62,300	77,050	96,400	111,720
Power consumption	100 watts	100 watts	100 watts	100 watts
Electrical Rating	120 Volt/ single phase/ 60 Hz.			
Temperature -Space heating	Adjustable: 45C(118F) to 85C(185F)			
Temperature – Dom. heating	Adjustable: 70C(158F) to 85C(185F)			
Glycol compatible	Up to 30% Propylene Glycol			
Boiler accessories	Internal manual fill & pressure tank, pressure gauge, air eliminator			
Fuel				
Fuel Types	NATURAL GAS (N.G.) OR PROPANE (LPG)			
Min supply press. N.G.	5.0 in.w.c.			
Min supply press. LPG	11.0 in.w.c.			
N.G. manifold pressure	3.8	3.8	3.1	3.1
LPG manifold pressure	4.25	4.25	3.8	3.7
Venting Options (1)				
Concentric vent	Double wall concentric stainless steel vent kit (by manufacturer).			
Two pipe Forced Flue	Single wall CLASS 3 stainless steel Flue/ plastic or steel inlet air			
One pipe Forced Exhaust	Single wall CLASS 3 stainless steel			
Maximum vent length	3 metres (10 feet) All Models plus 2 elbows			
Installation Clearances (1)				
Top	10 inches			
Front	10 inches			
Flue or Vent Connector	Factory supplied concentric vent - 0" Around Flue Pipe			
Flue or Vent Connector	Single wall CLASS 3 Vent Follow vent supplier instructions			
Back	0 inches			
Left Side	10 inches			
Right side	10 inches			
Closet installation	Certified for closet installation, on combustible floor			
Dimensions				
Weight	40Kg(88lbs)	40Kg(88lbs)	40Kg(88lbs)	40Kg(88lbs)
Height	28.5"	30"	31"	31"
Width	18.5"	18.5"	20"	20"
Depth	11"	11"	12"	12"
Gas connection	½"	½"	½"	½"
Domestic water connections	½"	½"	½"	½"
Boiler water connections	¾"	¾"	¾"	¾"

(1) refer to installation instructions for vent clearances and venting options.