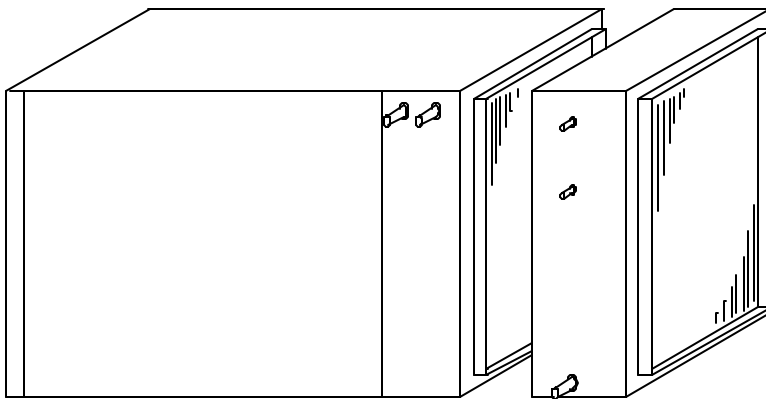


- Cased slab coil in an attractive and durable white painted finish to match the air handler.
- Mounts on the air handler supply or return to permit upflow, downflow or horizontal air handler installations.
- Select cooling capacities with an orifice assembly or a Tx valve.
- Small dimensions allows ceiling mounting or mounting above a water heater.

## Physical Properties

Model Type	Capacity (tons)*	Cabinet dimensions			Flange d x e	Line connections*			shipping weight
		a	b	c		liquid	vapour	drain	
HC1216	2	20"	14"	5"	16"x12"	3/8"	5/8"	7/8"	20 lb.
HC2020	3 ½	22"	22"	5"	20"x20"	3/8"	5/8"	7/8"	25 lb.

\* Maximum capacities. Specify desired capacity at time of order.  
All line connections are copper. Sizes are outside diameter.



Call us for assistance. Design manuals & detailed performance curves are available at our web site: [www.ecologix.ca](http://www.ecologix.ca) We have expert staff to handle any sizing, design or installation issue.

## **General**

**combo-pac**® add-on cooling coils may be mounted on the supply or return side of the air handler for maximum flexibility.

The cooling coil assembly must be mounted with the drain pan at the bottom so that air flows through the coil from left to right or right to left. Air handlers mounted horizontally may have the cooling coil mounted on the discharge (supply end). Horizontal draw through or the inlet (return end and back) of the unit is not recommended due to risk of blow-off. Air handlers mounted vertically may have the cooling coil mounted on the back, right or left side of the unit.

Air flow should be limited to a face velocity of not more than 500 feet per minute to minimize the risk of condensate blow off.

The filter rack (supplied with air handler) may be mounted right on the cooling coil.

## **C series air handlers**

The model HC2020 cooling coil flange has the same dimensions as the supply flange of the air handler and the filter rack flange (20" x 20"). The cooling coil may be mounted directly onto the supply flange using S-cleat.

There are two methods for mounting the cooling coil to the return end of the air handler. The filter rack must be mounted up stream from the cooling coil and may be mounted directly to it.

Method 1) Cut the opening on the back, left or right side of the air handler below the fan deck. The opening must be 18" x 18" (2" smaller in

each direction than the opening of the cooling coil) so that a 1" inlet flange can be bent out. The cooling coil may be mounted using S-cleat.

Method 2) Cut the opening 20" x 20" (same as the opening of the cooling coil). The flange of the cooling coil is cut into "fish-lock" style tabs. The tabs are simply bent into the cabinet to fasten the cooling coil to the air handler.

## **A series air handlers**

The model HC1216 cooling coil has the same dimensions as the supply flange of the air handler (12" x 16"). The flange of the filter rack is 12" x 16".

The cooling coil is mounted similarly to the C series air handler with the following exceptions: When the air handler is used in a vertical orientation and the cooling coil is mounted on the back of the unit a 12" x 16" to 16" x 12" transition is required.

Contact Ecologix for orifice sizes based on tonnage.